



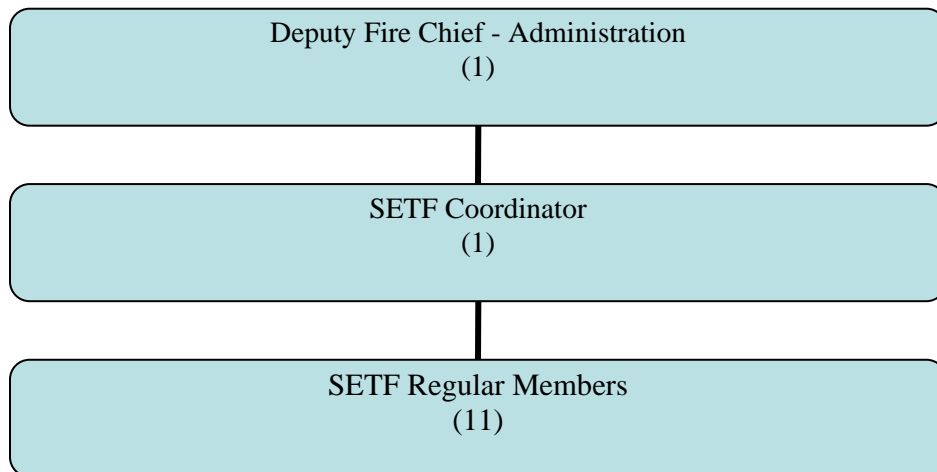
PURPOSE

To provide policy on the Rogers Fire Department’s Special Events Task Force, including its purpose, membership, and responsibilities.

POLICY

The Special Events Task Force (SETF) is comprised of regular members of the Rogers Fire Department who wish to participate in providing emergency medical response during special events. Members are typically trained to International Police Mountain Bike Association standards to operate a bicycle while providing emergency medical care, however other members are authorized to participate at the approval of the team coordinator. The team is eligible for twelve (12) formal members.

The organizational chart for the team:



The SETF is not required to have regularly meetings, but is required to exercise its equipment and maintain a state of readiness. Because SETF members do not receive an extra stipend, all sanctioned events are eligible for overtime calculation. The SETF is required to be actively familiar with events they are assigned to and create a positive public image of the Rogers Fire Department.

Membership

All members of the SETF shall be selected by a committee including representatives from Command Staff and the SETF coordinator. This process shall be developed by the Fire Chief and include a formal application process. To be eligible for SETF membership, a firefighter



Rogers Fire Department
Special Operations
604 Special Events Task Force
LAST REVISED: Dec 2009
Page 2 of 2



must complete an IPMBA bicycle operations course. Membership in the SETF can be revoked for any member based on participation, unrelated disciplinary action, or deficiency in skill. To revoke membership requires the approval of the SETF Coordinator and Command Staff.

Operations

The SETF shall operate using a travel trailer assigned to Station 1. Members assigned to Station 1 shall inspect and maintain the trailer weekly, according to the normal apparatus schedule.